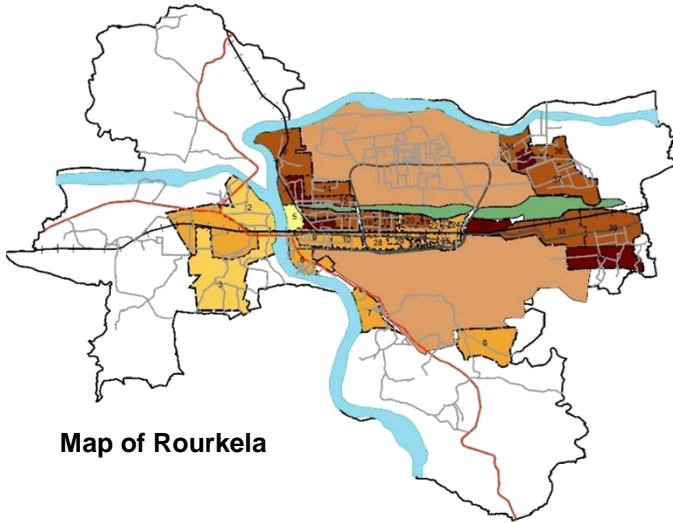


INCLUSIVE, RESILIENT AND SMART ROURKELA, ODISHA

The aim of the project is to support the Department of Housing and Urban Development (HUD), Government of Odisha to create an **Inclusive, Resilient and SMART Rourkela**, by improving the effectiveness of the various Missions focusing on the urban poor for sustainable poverty reduction and slum development.

OBJECTIVES

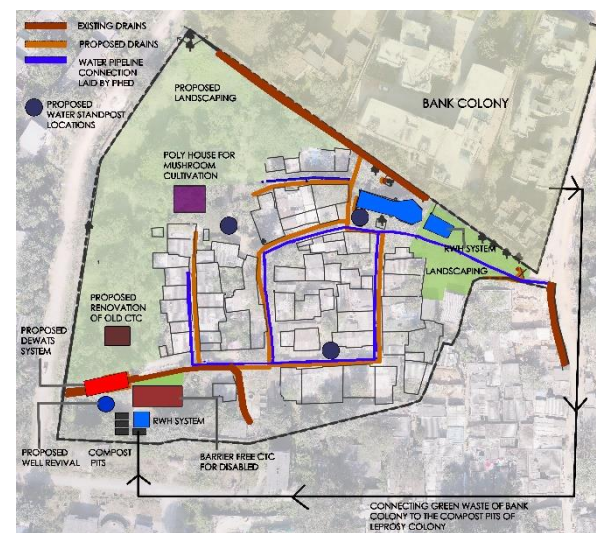
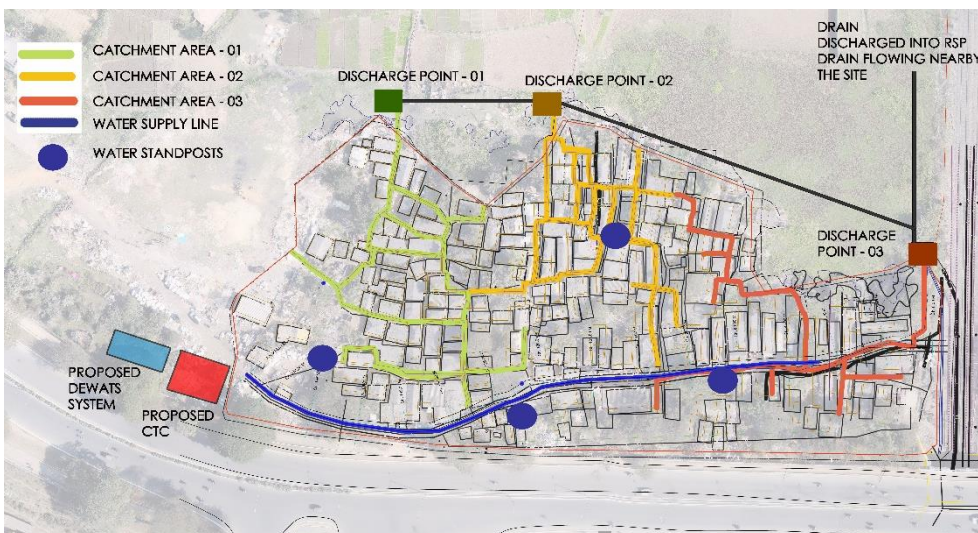


Map of Rourkela

CURE is working on 4 slums in Rourkela – Vyas Nagar, Rehmat Nagar, Leprosy Colony and Nallah Basti. Each slum is different imposing varying geographical and social challenges. Each slum is being developed as a sustainable model with water and sanitation infrastructure, livelihood opportunities, housing and waste water treatment systems.

The proposal aims to create a Resilient and SMART Rourkela that is inclusive, integrational and ecologically sustainable. It addresses comprehensively, issues of slums and slum development in Rourkela, specifically creating access to water-sanitation-housing services and livelihoods in a sustainable manner. It is also designed to support the Rourkela Municipal Corporation (RMC) and build their capacity for improving the effectiveness of the various urban development missions to ensure sustainable poverty reduction at a city-scale. Its four major objectives are to:

- Set up community-led, integrated, inclusive and equitable models for slum upgrading and development, and sustainable livelihoods, capable of replication and scale.
- Build local capacity for community-led slum upgrading and development and livelihoods.
- Build SMART spatial information systems for improving effectiveness of urban development programs
- Share knowledge of inclusive models and community-led processes with other cities.



Bottom Left and Right: Proposed site plan of Rehmat Nagar and Leprosy Colony respectively, inclusive of infrastructure like Community toilet, RWH systems, water pipelines, drainage system and DEWATS.